



January 2026

Editor: Kevan Nason, N4XL

Thank you to our group leadership:

President – Ed, K3DNE

Vice President - Dave, WN4AFP

Treasurer – Scott, KG9V

Secretary – Kevan, N4XL

Web Master – Frank, KG4IGC

SFCG Webpage: swampfoxcontestgroup.com

Annual SFCG Member's Meeting

Sunday January 25, 2026 at 2pm at the Lizards Thicket in Lexington (4616 Augusta Rd). See additional information below.

Note: There is more than one Lizards Thicket restaurant in the Columbia area. Be sure you put the correct address in your GPS.

Welcome N4IIT

Please welcome Charlie N4IIT to the SFCG! Charlie saw our club mentioned on an email reflector, has been following and loved reading our newsletters and now is a member! Charlie lives in Stone Mountain, GA, had short roots in SC when he worked at Clemson prior to his family's QSY to Atlanta. He's fairly new to the hobby licensed as KY4UH in January 2023, switched to the call N4IIT in spring of 2025 and holds an Extra ticket. His rig is a TS-590SG. His yard is small which leaves limited space for antennas. Right now it's a Hustler 4BTV trapped vertical as his primary antenna. Charlie tells me that something "clicked" for him at Field Day this year and he caught the contesting bug. He describes himself as primarily a CW op but is planning on exploring FT8 (for DX) and SSB (for county hunting). Charlie: Just wait for the state QSO party season to take off for more county hunting opportunities!

Welcome to the Swamp Fox Contest Group!

73

Ed K3DNE

Editor's Note: Charlie truly has been bitten by the bug. I looked him up on 3830 and he has 35 entries since his first posting on March 13th in the WIQP. According to 3830 he is actively working to increase his CW speed by working the weekly ICWC and CWops mini-tests and has entered such contests as the CQWW CW and SSB, ARRL 10, and NAQP CW. Keep it up Charlie and welcome aboard.

Welcome N6YMM

Please welcome Dave N6YMM to the Swamp Fox Contest Group! Dave was referred to SFCG by SFCG member Scott N2OG. Dave lives in Mauldin, SC.

Dave was first licensed as WA6EBD in the late '50s. He allowed that license to lapse when attending college at Fresno State. He thanks his XYL who gifted him a Xcvr and he returned to ham radio in 1990.

Dave states his favorite contest is November SS Phone - it was the first contest he operated and remembers a large cardboard dupe sheet to track QSO's and avoid dupes. He also enjoys CAQP, 7QP, ARRL DX, CQ WPX, CQ WW DX.

Dave: You picked a great time to join SFCG with the winter-spring contest season upon us (NAQP SSB and ARRL Jan VHF is next weekend then CQ 160, ARRL DX, CQ WPX within the next few months).

Welcome to the Swamp Fox Contest Group!

73

Ed K3DNE

Annual SFCG Officer Nominations

It's time to begin our annual process of selecting club officers for the upcoming year.

I have reached out to our current officers to confirm their interest in continuing in their roles for **2026**.

- **Secretary:** Kevan N4XL – Desires NOT to continue. **This is an open officer position for 2026.** Please consider either self-nomination or nomination of another member for this open position.
- **Vice President:** Dave WN4AFP – Agrees to run for re-election (nominated by me).
- **Treasurer:** Scott KG9V – Agrees to run for re-election (nominated by me).
- **President:** Ed K3DNE – Willing to continue unless another member expresses interest by self nomination or nomination by another member.

Kevan N4XL has served as our Secretary for more than three years, and we extend our sincere appreciation for his dedication and contributions. He will continue to serve as Editor of our *Tales from the Swamp* newsletter. In truth, Kevan does far more than edit - he creates the majority of the newsletter's content. He also serves as our education coordinator, delivering numerous Zoom seminars for our membership.

Both Kevan and I, and the other officers share this view, we believe it is important for all members to take an active role in the club. Member participation brings fresh ideas and perspectives that help shape our group's future.

At this time, nominations are open for *all* officer positions. Members are encouraged to nominate themselves or other members for any role, even if the current officer is seeking re-election. Please confirm the nominee's interest before submitting their name.

How to Submit Nominations:

- Email me directly at k3dne@comcast.net, or
- Post your nomination to the group via our Groups.io reflector or by replying to this email.

Deadline for Nominations:

Midnight (EST), Sunday, January 11, 2026.

Election Details:

Voting will occur during our annual meeting; **Sunday January 25, 2026 at 2pm at the Lizards Thicket in Lexington (4616 Augusta Rd).**

For reference, I've included the official duties of each officer position below (copied from our website).

Thank you for your participation in shaping the leadership of our club. Let's make 2026 another successful year!

73,

Ed K3DNE

President, Swamp Fox Contest Group

Article III: Duties of Officers

Section 1. President

The President shall preside at all meetings, and conduct them according to the rules adopted. He/she shall enforce due observance of this Constitution and By-Laws; decide all questions of order; sign all official documents adopted by the club, and perform all other duties pertaining to the office of President.

Section 2. Vice President

The Vice-President shall assume all the duties of the President in his/her absence. In addition, he/she shall organize club activities, plan and recommend contests for operating benefits, and advance club interest and activity as approved by the club.

Section 3. Secretary

The Secretary shall keep a record of the proceedings of all meetings, keep a roll of members, submit membership applications, carry on all correspondence, read communications at each

meeting, and send notices to each member. At the expiration of his/her term he/she shall turn over all items belonging to that office to his/her successor.

Section 4. Treasurer

The Treasurer shall receive and receipt for all monies paid to the club; keep an accurate account of all monies received and expended; pay no bills without proper authorization (by the club or its officers constituting a business committee). At the end of each quarter he/she shall submit an itemized statement of disbursements and receipts. At the end of his/her term he/she shall turn over everything in his/her possession belonging to the club to his/her successor.

SFCG's annual meeting will be held on Sunday, January 25'th at the Lizard's Thicket in Lexington SC at 2PM. 2PM is the earliest weekend time they had available where they can *partially* guarantee that the private room will be available for a private event (apparently business is booming and they use that room as a regular dining room on weekends). Again, this year, I requested a firm 2PM availability but they can't guarantee that all previous customers will have finished and be out of the room by 2PM. There is a group that has the room reserved after us (at 4:30pm) so we'll have to be done and out of the room no later than 4:15PM. I will attempt to keep the meeting moving at an appropriate pace!

Spouse or a guest are welcome. If you know of a potential member please feel free to invite that person as a guest.

The Lizard's Thicket is located on US-1 between I-26 and I-20 west of I-26 in Lexington SC (see address and phone # below). There are many Lizard's Thickets in SC - I went to the wrong one in 2020 and was late to the meeting!

Lizard's Thicket
4616 Augusta Rd.
Lexington, SC
803-785-5560

In addition to the usual business meeting/elections, SFOTA award presentations, a review of our club's success in club competition events, lunch/dinner (order off the menu and pay individually), there will be a presentation by Scott N2OG on his experiences setting-up and getting his remote station operational.

Minutes will be posted on our website as soon as available.

Looking forward to seeing you there!

73,

Ed K3DNE

Contest Tips:

Editor: Going forward I am going to reuse contest tips from past years. They will be new to our recent members (who may never have heard them) and a review for old hands is always a good idea. I wrote some of these down for myself when I first started contesting and did not always include where they came from. I apologize if someone is upset from unattributed tips, but

please be assured I am not trying to claim these as originating from me – unless specifically mentioned as coming from me.

- Be mentally prepared to compete at whatever level you have chosen.
- If you think your transmit signal is weak and find yourself in a lot of long, frustrating attempts at search and pounce contacts, notice whether you've got your receive preamp on and consider turning it off.
- If there is no reason why the other station won't come back to you, stop! Check your output power/swr first, then check to see if you are inadvertently operating split.
- If you are tuning across a quiet 10, 15 or 20 meter band with your preamp on and hear a very weak signal you wouldn't normally think you could work, give a call anyway. I couldn't count the number of times I've been surprised when a barely audible not even S1 signal immediately comes back with my correct call letting put an unexpected multiplier in the log. (From N4XL)
- One thing that I do is hide the summary window during the contest. I do this because if I see that I have 395 q's on 15, I will stay on the band and try to make 400, even though I should be going back to 20 because 15 is dying now. Probably just kind of a personal thing. I do check after 24 hours to see how the country totals are and whether to look for more mults or q's. The last CQWW CW, I didn't have any idea what my score was close to, until with about 1/2 hour to go, at the bottom of the CT screen, it said something like, "Boy you must be on the eastcoast with 3M" or "Boy you are good-3 million".
- If your rate drops below a certain point (#Q's/hr will vary with the time of day, point in the sunspot cycle and the station itself), work 3 bands every hour - this does not include working occasional people on the second radio - it means going to that band and CQing or S&Ping.
- While it may seem like a no-brainer on CW to S&P by dumping your call in once at a nice snappy 35 wpm, it's all wasted effort if the guy you're calling can't copy it. Also, many beginning ops aren't sure you're calling them unless they hear their call too. So vary your speed and think carefully about when the type of operating at the other end might suggest that you use the other guy's call de your own. A smart contester varies his operating procedure according to the conditions of the moment. No, one size does not fit all!
- Situation: Big screaming pile-up to Africa/South American during CW contest. Tactic: Try slowly moving your VFO across the pile-up while sending your call. It is amazing how the frequency change will get the DX stations attention. Move slowly and not so much that you move out of his passband.
- At a rate of 60 Qs/hour, you would work 2,880 stations in a 48-hour contest. At 30/hour, you'd work 1,440 stations in a 48-hour contest. Even a rate of 15/hour (only one QSO every 4 minutes!), you'd still work 720 stations in 48 hours! (From N4XL)
- Cherry pickers don't win. If you give up when the time between Qs stretches out to 4, 6, 10, or more minutes, you give up your competitiveness. A contesters mettle is measured in the dead of night when calling CQ endlessly on a seemingly dead band or when tuning 20m or 40m or any other band straining to pull that next new station out of the noise. (Hint: This is where 1 dB or less makes all the difference in the world.)

Highlights From The Reflector:

- John W7WZ was happy to report during the ARRL 10 meter contest he was putting 12.75 mults/hr into the log.
- John W7WZ also posted his contest station call has changed from KB4DX to K4NDX which should limit the request for repeats by other stations and increase the contest team's rate.
- Gil KS4YX also worked the 10 meter contest, but at the other end of the power categories. Gil went QRP and still managed to put 22 countries in the log.
- Ed K3DNE posted an ARRL Contest Update blurb that said recent solar activity confirmed we are having a double peak in our current sunspot cycle. That is great news.
- Scott KG9V recruited many SFCG members for the W1AW/4 America250 event.
- John W4IX has been tearing up the bands lately. I have always held John up as one of my contesting heros and he is definitely living up to the nickname I heard the operators at the Multi-Multi Superstation calling him – “The Contest Monster”. Examples of John's recent scores are NAQP CW 290160, NAQP SSB 302634, ARRL 10 CW 897152, and ARRL160 164,120. He did very well in the Stew Perry Topband Challenge with 460Q's and 2,187 points during his SOLP effort. I could go on, but I'm tired of typing all his great scores and need a break. Great Job!!
- It looks like Dave WN4AFP is going to start taking his quest to wall paper his shack with 1st place certificates on the road. He is asking about antenna hitch mounts for his new GMC Sierra truck.
- The 2026 SFOTA award page is up and running.
- Andy helped us out and posted a very respectable 242K in his NAQP CW effort. Great work, Andy.
- There was quite a thread discussion started from a link posted about an audio clip of the Thunderbird radio communications.
- Bob W1RPG was finally able to get WSJT-X working with N1MM by viewing a YouTube video. See https://youtu.be/rGiBos2Y85o?si=83_x4EdWKxA05qnp
- Dennis K2SX was enjoying the NAQP CW until RFI came to visit him. First his keyboard went dead, then his mouse, then N1MM stopped taking any input. After some unsuccessful troubleshooting he decided Mr. Murphy hated him and decided to ignore the issues. He went to watch the Panthers play. They weren't doing very well either so he moved on to Netflix. Sometimes one just has to accept things as they are and make the best of the entertainment that is available.
- Several SFCG members and people in the broader contest community have noticed South Carolina is no longer difficult to work. As Matt NU4E recently put it, “Swamp Fox were everywhere. I was afraid to miss SC as a mult :-)” I remember moving to SC and saying to my XYL I liked being here because SC is in demand. I also remember John W4IX once saying after a CAQP that he had heard a couple California Ops saying, ‘If you hear “SC” in the exchange it is either W4IX or N4XL’. Times have changed. Congratulations everyone to bringing the SC mult to everyone.

SFCG QSL Card Ordering Information

The SFCG QSL card ordering window remains open! The club discount is \$100 off any order of 250 cards or more.

Dennis K2SX asked for a slightly different QSL card front by increasing the size of the map/circle logo and I was able to make the fox head slightly larger as well. I kinda like the larger logo and fox head. K2SX also had that logo moved from the lower right corner to the upper right corner of the card to suit his desire.

How to Order:

- **Contact Randy directly at KB3IFH via email at:** kb3ifh@yahoo.com . Mention you are with SFCG. He'll send you an invoice with the discount (I paid via PayPal) or you can pay by check. The club discount (\$10 off any order of 250 cards or more).
- Choose a back QSL style of the 27 different back of QSL styles on the website: <https://www.kb3ifhqslcards.com/qsl-backs>
- Include any logos you desire on the back of your card. If you have the skills and want to manipulate/change a SFCG logo that is fine - nothing is copyrighted. You may also add other logos (FISTS, QWCA, ARRL and others). I don't know if Randy has logos saved and ready to use? You should ask and/or you may have to go to their webpages and copy/paste and send to him. Watch out for anything that may be copyrighted.
- If you do NOT desire the club custom designed front QSL (photo of the swamp) you may choose from any of his stock design card fronts from the website (and still receive the club discount). <https://www.kb3ifhqslcards.com/>
- If you want to use the larger front of card map/circle logo revised for K2SX let Randy know.
- See the photos of the K2SX card (with larger map/circle logo and larger fox head) vs. my original (smaller map/circle/fox head)



[The Case of the Crossed Wires \(or How I QRM'd Myself for Two Years\)](#)

By Gary W4EEY

About four years ago I married (for the last time I might add) and we moved to a house in Anderson County. About two years ago we were able to build an extension for my workshop and classroom studio (for the YouTube Ham Classes that I teach). I extended my LAN Ethernet cables to the studio from the main house.

Contractors installed the cables but I installed the connectors.

I tested the cables at the time using a simple RJ-45 cable tester (like this one <https://amzn.to/4pkqUSx>). As I recall all of the cables tested fine. Good continuity and no shorts. I connected the cables from the house to the studio/workshop via 1,000 Mbps switches. But I had a problem.

The connection to the studio topped out at 100 Mbps – not the 1,000 Mbps expected.

I rechecked the cables. I added an Ethernet Extender (this one <https://amzn.to/3KBarKE>). But no matter what I did I could not get full speed to the studio. So I just lived with it.

At about the same time (though the coincidence didn't dawn on me) I found numerous wandering birdies on the HF bands. I suspected it could be interference from my LAN (based on past experience) and so I ordered Ethernet line filters from DX Engineering (DXE-ISO-PLUS-2). It was quite an investment and it did help some. But my problem still persisted.

Fast forward to today. I decided I wanted to re investigate the slow LAN speed to the studio and I ordered a new Ethernet cable tester. (This one: <https://amzn.to/4rE5JMS>). Maybe I could find something.

I began testing cable connections. When I got to the cable between my garage and the studio I was dumbfounded to see the analyzer say that wires 6 and 7 were cross connected. They should have been straight through.

Why hadn't my other analyzer found this? I'm not sure. I do know that it uses a 9V battery and when it dies the readings get squirrely. For over two years I've lived with this issue. Out with the wire cutters, a redo of the connection and proper readings were restored. I now had 1,000 Mbs connectivity!

But wait – there's more to the story.

15 Meters was always the worst for the interference. It was a shame because 15 was always my favorite band. But what's this?! A scan of 15M showed a marked reduction in repetitive birdies. The interference was gone!

100 Mbps Ethernet uses two pairs of wires. 1,000 Mbps Ethernet uses four pairs of wires. One pair of a long run of cable had been improperly terminated with the crossed wires. The energy had to go someplace and so it was being radiated to my antennas. Who knew?

While I'm frustrated that I missed this originally, I am overjoyed at the final result.

See you on the bands!

73 de W4EEY

Switching Logging Programs, aka "How Do People...?"

By Kevan N4XL

This concept was in response to a question about N1MM but it is so universal I thought it worthy of a general topic article. Tom N1MM's comment to a user question about his

switching to the logger N1MM from another program really resonated with me. Tom's observation can apply equally to leaving N1MM for another program too, and to many topics – radio related or not – where new techniques must be mastered.

Most people ask questions to solve a specific problem they are having. I can hear you now, "Duh! Well, of course they are you idiot! That's why they are asking a question." Not so fast, Grasshopper.

One problem with asking questions worded in such a way to answer only the one specific issue they are having is people base their question only on information they know – or think they know. Too often people discount a perfectly good answer that would solve their problem because the answer seems unrelated to what they *believe* is wrong rather than what is *actually* wrong. Time is wasted before the people trying to help can overcome the self-generated prejudice the asker unconsciously has to only accept answers within the framework of their knowledge rather than looking further afield for the solution. An example of such a thing is when people insist their logging program or WSJT-X has a setup issue when the real problem is a Microsoft Windows setting. Too often the asker ignores people trying to direct them to a Windows solution and repeatedly describes what they are unsuccessfully trying within WSJT-X and N1MM.

Another unappreciated problem with questions that are too specific is they limit the responses received. Sometimes an answer will be given that doesn't solve what the asker is specifically trying to do and instead presents a superior way to accomplish what the end goal of the asker is.

Case in point. N1MM can be used for Single Operator Two Radio (SO2R) contesting while using two keyboards. One keyboard is dedicated to each radio and only that radio. Graham G4FNL would sometimes start N1MM and find his keyboards controlling the wrong radio. He asked the N1MMLoggerPlus reflector these two clearly articulated and reasonable questions. He phrased the questions exactly as I might have. He wrote:

1. how do I reliably assign each keyboard (with each radio)?
2. I would like to be able to independently scroll up/down the band map on, say the 'mult' radio, using a keyboard command (CTRL up / CTRL dwn) but when I attempt it, the focus moves away from the 'run' station. How can I configure things to allow the two keyboards to operate each radio (and log window) independently?

The answer to the first is easily found in the manual and was promptly answered (Learning Hint: Read the manual). The second answer is how this article came to be.

N1MM's Band Map will highlight stations you haven't worked. Graham G4FNL wanted to quickly jump from one to another of those stations displayed on the Band Map. Using the Band Map in that way is a feature shared with other logging programs so I'm assuming that is what he was used to doing, but it isn't the most effective way to jump between stations in N1MM. Top scoring experienced N1MM Operators often focus on using the Available Mult & QSO (AM&Q or AMQ) window instead of the Band Map. Graham received this advice from VE9AA:

"... BTW, you "triggered" me (hi hi) to politely advise you that [t]he AMQ window is probably easier to scroll up down using ALT-A on whichever kb [keyboard] suits you at that moment in time (for you and I, there are 2 AMQ windows) (and you can either have it set to all qso's or just mults. Then you can sort it by time, beam heading or mothers hat size if you like. Scrolling the bandmap takes longer, is less efficient and uses more brain power. (just my opinion)

GL in whatever you decide Graham"

After looking at what the AMQ window had to offer over the Band Map method he was trying to use Graham responded,

"I was unaware of that facility. I have not investigated the AMQ window before. I've just taken a look – and that seems to do what I need it to do. ALT-A works – so MANY thanks for pointing me in the right direction."

Tom N1MM added this sage bit of advice to the thread.

If you are coming to N1MM+ from another logging program, you might want to review the list of windows in the docs tab of the web site.

(Editor's Note: Learning Hint – Read the manual)

Another idea would be to ask how to do things in N1MM+ that you do in your old logger. When you do that, you might want to phrase them not in terms of specific steps (like jump to spots in the bandmap), but more in the lines of "How do N1MM+ users find new mults to work?"

Also, a number of our SO2R ops use Key Mapping to customize the flow of QSOs. See: Key Mapping

At the risk of repeating the obvious, Tom advocates using the tried-and-true principle of asking open ended questions. You will sometimes be pleased with the answers you get.

If you aren't inclined to ask for help here is another way to figure things out, and that could mention things you weren't aware of that help your fun and scores. If I perceive a need for something during a contest, I usually jot it down on paper rather than waste time figuring it out during the contest. Afterwards, I start researching. Look through the manual. Do keyword searches of various reflector archives for how top scoring operators do things. (I call those people my "Truth Talkers". People who give advice but consistently have low scores on 3830, or who don't post there at all, or who rarely enter contests are labeled as "False Prophets". False Prophets can be right, but I've found more times than not their advice is of minimal value.) I also search the internet for information on the topic paying particular attention to files from the Contest University and individual websites of my Truth Talkers. You can sometimes find presentations they've given or articles they've written that are full of useful tips. Consider the pros and cons of what they recommend in relation to your personal and station capabilities. Then try out your chosen method in the next contest. Be prepared to modify your choice after you've used the technique once or twice.

By 'your personal and station capabilities' I mean that advice coming from a consistently top 10 placing Op, with several towers, located in New England, who has 30 years contesting experience, uses 1500 watts telling you how to best do something might not be applicable to you if you have 1 year of experience, a 100 watt barefoot rig, a dipole at 30 ft, and are in South Carolina instead of geographically favored New England. It doesn't mean that the Great Operators advice is wrong, it just might not be good advice for you.

After becoming a more experienced tester, I also learned advice that initially seemed minimally useful was actually great advice regardless of station size or QTH. In other words, don't be stagnant. Periodically revisit your operating style and adapt as your skills, station, and available technology improve.

By the way, I use both N1MM's AM&Q window AND the Band Map when contesting since each has their own advantages. I also use the Spectrum Window since it adds yet another set of tools that help me find and quickly move to unworked stations.

Observations by the Editor:

- Volume and other adjustable controls on older electronics that use potentiometers instead of modern rotary encoders. The older type controls can become scratchy and hard to

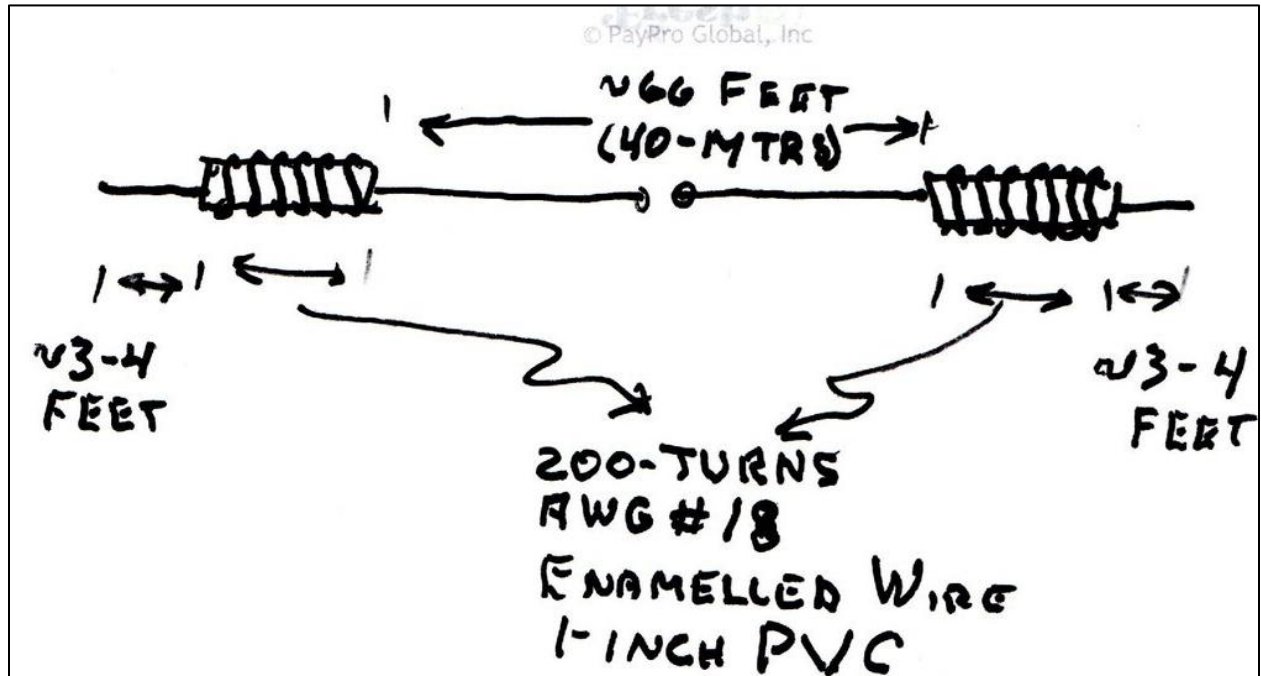


adjust. They can be difficult to fix. Suggested repair methods included pouring alcohol into it or disassembly to directly clean the carbon surface and wiper arm. I never had much lasting luck with either and ended up either replacing the "pot" or simply chucking the device into the trash because of a failed \$2 part. While looking for some DeoxIT to clean electrical connections, a proven cleaner/lubricant, I ran across DeoxIT Fader, P/N F100L. Because regular DeoxIT works great and reviews for their fader cleaner were very positive I decided to give it a try. It came in handy for the first time today when a MFJ554 Practice Code Oscillator had a scratchy volume control. The practice oscillator was in an auction lot of equipment so no telling how old it was, but the scratches coming from the speaker weren't surprising to hear. It also wasn't possible to adjust volume over the full range. The DeoxIT Fader worked great! After opening the MFJ and a few drops from through the applicator tube were placed directly into the volume fader. After twisting the pot back and forth a dozen times I plugged the MFJ back in and was rewarded with finding most of the scratching was gone. Although probably not necessary, a couple more drops were applied and the knob was cycled several more times. Wallah!

No scratchiness and the volume smoothly varied across the full adjustment range. Every Ham should have some of this stuff. Now I feel comfortable about putting the code oscillator in the bins of stuff I'm taking to the Greenwood Hamfest.

- Dave W0LEV posted this diagram of his version of a shortened dual band 40/80 meter dipole. He wrote, "I've emailed the 80/40-meter inductively loaded "dipole" several times on this and other groups. However, have a look at the attachment for a "technicians" set of

instructions on the dual band dipole inductively loaded for 75 or 80-meters. Choose your 75/80-meter operating frequency center by simultaneously adjusting an inch at a time the "stingers" the far side of each inductor." I've been kicking around the idea of putting a new dipole about 50 ft up between two trees I have. I wasn't sure whether to do a 40 or 80 antenna but had pretty much settled on a simple 40 meter dipole. This looks like an easy to construct 40 antenna which also has compromised, but effective, 80 meter capability to supplement my 40 vertical, low 40 inv-vee, and the 160 inv-L I'm also using on 80.



- Apparently, I'm not the only one who hates the "improved" way Windows 11 handles sound settings. Months ago I created a shortcut on my Stream Deck to open the older Windows 10 (and earlier) version of the Sound Control Panel with a single press of a button. In response to a query on the N1MM reflector David K1TTT wrote:

One of my big hates with win11 is the new sound settings... especially those buttons that change labels to show what pushing them will do, not what the current state is. The other bad thing is they don't easily allow you to turn off the special effects which can include ALC, noise reduction, equalization, volume reduction when certain events happen, and a bunch of other stuff depending on the capabilities of the hardware. I highly recommend finding the old Sounds control panel app and the old volume mixer that shows each program using a device as a vertical slider with it's own mute button.

To get the old sound control panel go to Run and enter mmsys.cpl. the volume mixer is sndvol.exe.

Note that the first thing I do with a new windoze installation is go through and set all devices to 16 bit 48khz, turn off exclusive mode, and turn off all special effects and enhancements.

You can also set up a desktop shortcut to mmsys.cpl and get the old control window with a mouse click. In Windows 11 the file is located at C:\Windows\System32\mmsys.cpl

- Although it is a bit difficult to learn, CC-User is a very useful program for those of us that use spots for contesting, and among the general non-contesting Ham population in general. Why? A partial list for testers... It allows me to filter by simply clicking a check box

instead of typing out cluster commands. I can easily, and visually verify, I am only receiving spots for a particular state during a state QSO Party, or from a particular country for something like the Worked All Germany contest. To keep from being bombarded by spots from places like California or England N1MM lets you filter to only receive spots that are heard in particular regions, like K4 only or from both K3 and K4 but nowhere else, but CC-User lets me drill down and say things like only show me spots that people in SC, GA, NC, FL, TN, VA, AL, MS, PA and OH heard. (Note: It surprised me to realize many times OH and us here in SC can often hear the same stations when we here in SC can't hear what the New England folks are working.) As mentioned, there is a learning curve to take advantage of A rough draft, half-finished, user guide for CC-USER is available from Gary ZL2IFB at http://www.g4ifb.com/CC_User_Manual.pdf. Gary writes, "Back in 2021 I started drafting a user manual for CC User (aka Cluster Client). Unfortunately Lee declined to get involved at that time so the project ground to a halt when I couldn't figure out various functions and settings without his help. Having just dusted-off the document, I see it is about half done - various sections are barely started, there are several unanswered questions and guesses - but in the absence of the 'official' guide, I hope it will be of some value, especially if we are able to complete it, as a group. Please be gentle on me. I know there are errors and omissions. You can help by offering corrections and fill-ins (please email ZL2iFB@gmail.com)."

- The ARRL is doing an America250 WAS Award event. See web page <https://www.arrl.org/america250-was> for details. Dave WN4AFP helped hand out SC and The Swamp Fox Contest Group by using WW4SF during the weekly CWT mini contests. His exchange was SWAMPFOX SC. Good on you, Dave! But I'm a wonderin... Since you love to send CW at 50 wpm how many asked for fills or just used auto-fill to automatically enter the wrong exchange into their logging program?

N3FJP Tips:

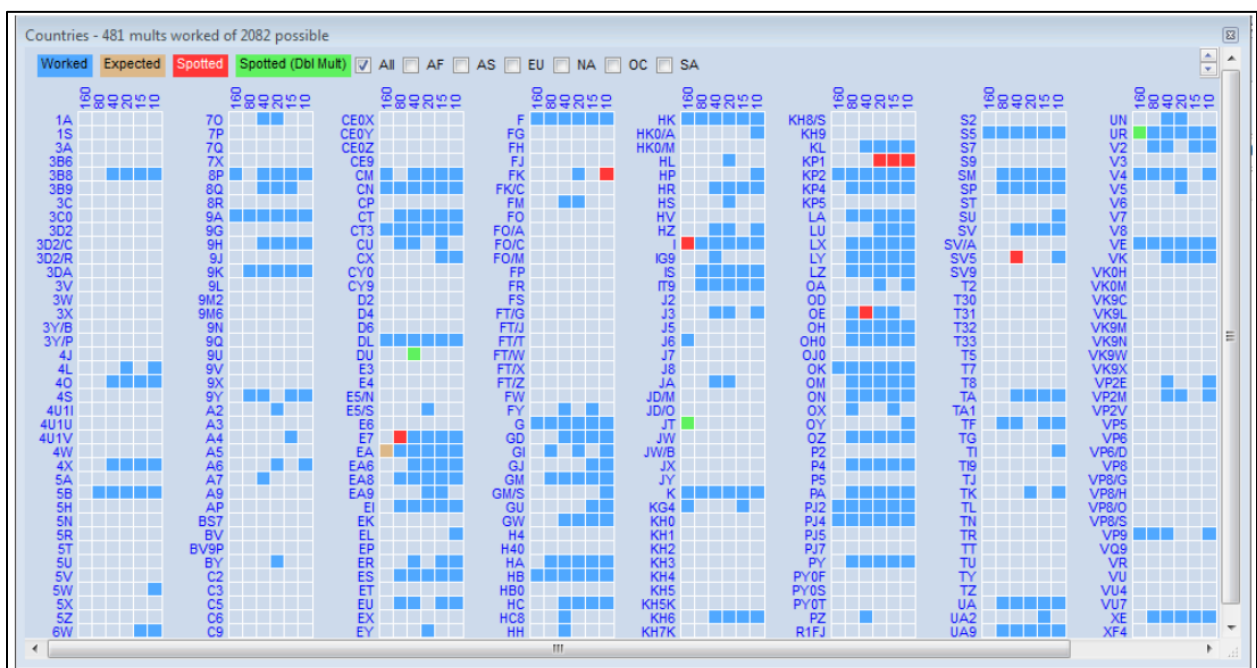
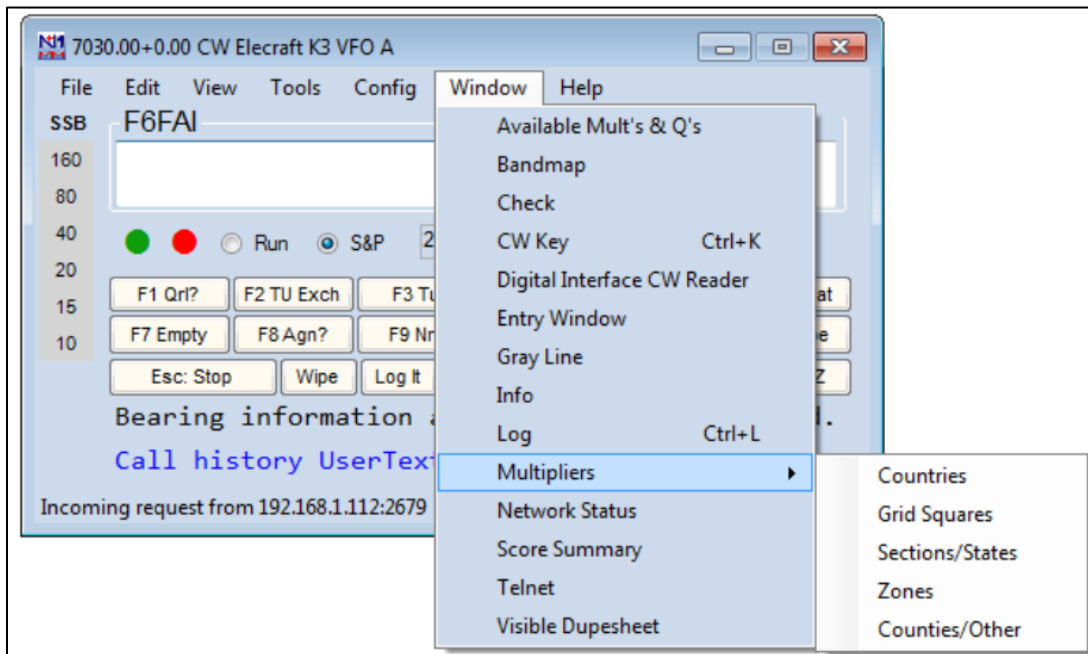
None this month

N1MM+ Tips:

NOTE: Unless otherwise specified references to problems people are having, solutions, and tips come from the N1MMLoggerPlus Group.io reflector. A search there for items described should turn up the original posts and replies.

- Selected changes made since last newsletter. (NOTE: These often come from a user requesting a change or fix to a problem.)
 - Addressed some network discovery issues including automatic network discovery
 - Changed COM Port Configuration defaults so DTR and RTS is Always Off and Stop Bits = 1
 - Corrected UDC PointsPerContact calculation issues

- If you weren't aware you can save your Fkey messages with the name of a specific contest and then assign that Fkey file to your log the next time that contest comes up? The same can be done with recorded .wav files. You can also save the overall configuration you used for a specific contest (i.e.: what windows are open, where they are located on your monitor, what COM ports things are using, etc.) and recall it for next year's contest too. I'll be giving a Zoom talk about that.
- N1MM has a Multipliers window which will show you things like which multipliers you have worked, which are currently spotted and what bands they are on, and if you do the upfront work it will show you which are expected to be on the air and what bands they should be operating on. The window can be set for things like Countries, Grid Squares, Sections/States, Zones, and Counties.

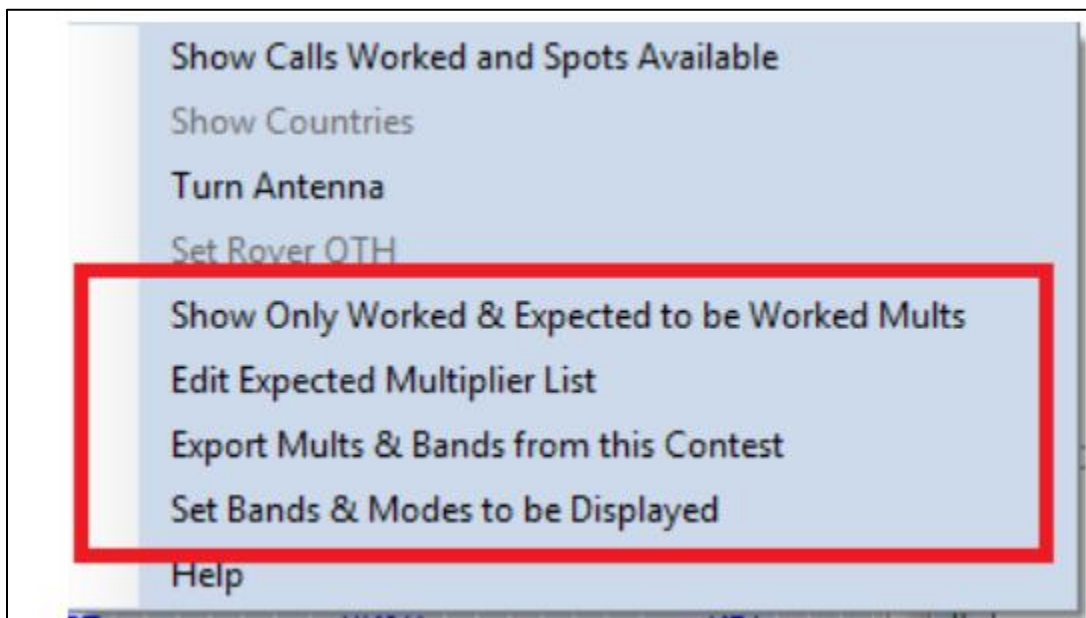


Tailoring Mult Lists for Particular Contests

Users will often want to tailor one of the seven available multiplier lists to a particular contest or QSO Party; for example, in WAE, non-European competitors will only want to keep track of European country multipliers.

As a first step in this direction, the seven check boxes across the top right of the Countries multiplier window permit you to limit the display to a single continent. Only one can be displayed at a time, but once you leave the "All" display, you will discover that you have some flexibility in the way that the columns of multipliers are arranged, to help you make best use of your screen space. This varies from one type of multiplier to another – for example, the States/Sections window must be displayed as a wide rectangle to group 10 US call areas and the Canadian sections in logical order

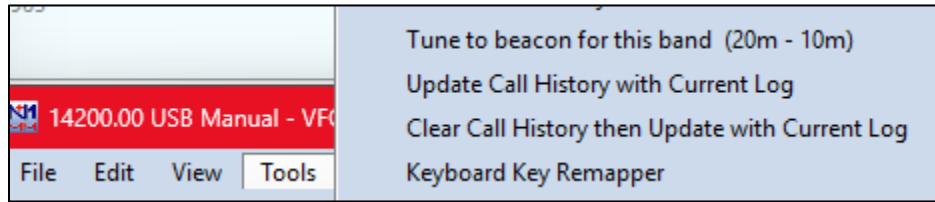
Options for doing this are found in the right-click menu reached from any of the multiplier lists. Depending on the contest and the window, some of these entries may be greyed out.



See the N1MM manual for more information

- If you use the Call History Lookup feature to automatically fill in exchange information, it isn't unusual during a NAQP or State QSO Party to find the Call History File has wrong information. If a station is supposed to be in TX and they report they are in AZ for this contest you simply make the Entry Window change and keep on truckin'. But when you find the station on another band you must again change TX to AZ. I often use the "Update Call History with Current Log" feature which is under the Entry Windows Tools section. After making an exchange field

change I wait for a few seconds free time in my run and click on that Update Log function so things are ready to go the next time.



Upcoming Contests:

See the WA7BNM webpages <https://www.contestcalendar.com/contestcal.html>

SFOTA Current Leaderboard:

Jan-20-2026						
Current Leaderboard						
2026 OVERALL STANDINGS						
CALL	Contests	CW QSO'S	SSB QSO'S	DIGITAL QSO'S	RTTY QSO'S	TOTAL QSO'S
1) WB4HRL	30	1954	31	0	101	2086
2) KE4EA	19	1328	308	0	0	1636
3) K3DNE	2	490	789	0	0	1279
4) WN4AFP	3	466	351	0	0	817
5) K4FT	4	561	0	0	210	771
6) N4IIT	6	378	0	0	374	752
7) KD4S	3	202	0	23	317	542
8) WB3X	3	440	0	0	0	440
9) KS4YX	1	0	0	0	381	381
10) K4QQG	3	16	214	0	114	344
11) KZ3P	3	209	0	0	125	334
12) KG4IGC	2	0	131	0	166	297
13) K2SX	3	213	0	0	0	213
14) W4ANT	4	50	0	0	150	200
15) WA4LDU	3	24	11	55	98	188
16) K7OM	1	0	0	0	182	182
17) NV4T	3	0	0	0	164	164
18) NI7R	1	145	0	0	0	145
19) W1RPG	1	0	133	0	0	133

2026 INDIVIDUAL MODE STANDINGS							
CALL	CW QSO'S	CALL	SSB QSO'S	CALL	DIGITAL QSO'S	CALL	RTTY QSO'S
WB4HRL	1954	K3DNE	789	WA4LDU	55	KS4YX	381
KE4EA	1328	WN4AFP	351	KD4S	23	N4IIT	374
K4FT	561	KE4EA	308			KD4S	317
K3DNE	490	K4QQG	214			K4FT	210
WN4AFP	466	W1RPG	133			K7OM	182
WB3X	440	KG4IGC	131			KG4IGC	166
N4IIT	378	WB4HRL	31			NV4T	164
K2SX	213	WA4LDU	11			W4ANT	150
KZ3P	209					KZ3P	125
KD4S	202					K4QQG	114
NI7R	145					WB4HRL	101
W4ANT	50					WA4LDU	98
WA4LDU	24						
K4QQG	16						

3830 Activity:

Contest	Call	Class	Pwr	Score
9A DX				
12/21/25	KA2G	SO SSB	HP	896
ARRL Jan VHF				
01/19/26	K3DNE	Single Op-All Modes	HP	6,572
01/19/26	KD4S	Single Op-All Modes	HP	299
01/19/26	WA4LDU	SO3Band-All Modes	LP	3,619
NAQP CW January				
01/11/26	AA5JF	Single Op Assisted	LP	242,046
01/11/26	K1ZZI	Single Op	LP	93,758
01/11/26	K2SX	Single Op Assisted	LP	7,074
01/11/26	K3DNE	Single Op Assisted	LP	109,270
01/11/26	K4FT	Single Op	LP	55,950
01/11/26	K4QQG	Single Op	LP	160
01/13/26	KE4EA	Single Op Assisted	HP	2,829
01/11/26	KZ3P	Single Op Assisted	LP	15,910
01/11/26	N4IIT	Single Op Assisted	LP	29,000
01/11/26	N4IQ	Single Op Assisted	LP	190,212
01/12/26	N4XL	Single Op Assisted	LP	1,155
01/11/26	NI7R	Single Op Assisted	LP	10,875
01/11/26	NN4SS	Single Op	LP	5,992
01/11/26	NU4E	Single Op Assisted	LP	44,750
01/11/26	W4IX	Single Op Assisted	LP	290,160
01/11/26	WA4LDU	Single Op Assisted	LP	480
01/11/26	WB3X	Single Op Assisted	LP	37,994
01/11/26	WB4HRL	Single Op Assisted	LP	47,250
01/11/26	WN4AFP	Single Op Assisted	LP	66,220
NAQP SSB January				
01/18/26	K3DNE	Single Op Assisted	LP	179,103
01/18/26	K4QQG	Single Op	LP	20,330
01/18/26	KE4EA	Single Op Assisted	LP	36,344
01/18/26	KG4IGC	Single Op Assisted	LP	13,100
01/18/26	N6YMM	Single Op	LP	7,140
01/18/26	NU4E	Single Op Assisted	LP	235,914
01/18/26	NV4T	Single Op	LP	6,283
01/19/26	W1RPG	Single Op Assisted	LP	7,315
01/18/26	W4ANT	Single Op	LP	15,010
01/18/26	W4IX	Single Op Assisted	LP	302,634
01/18/26	WB3X	Single Op Assisted	LP	47,656

Contest	Call	Class	Pwr	Score
01/18/26	WB4HRL	Single Op	LP	620
01/18/26	WN4AFP	Single Op Assisted	LP	53,352
OK RTTY				
12/21/25	KZ3P	SOAB	HP	2,295
12/21/25	N4IQ	SOAB	HP	38,088
RAC Winter				
12/21/25	K4FT	Single Op Assisted	LP	12,456
12/21/25	K4QQG	Single Op Assisted	HP	28,952
12/21/25	KA2G	Single Op Assisted	HP	25,896
12/21/25	KZ3P	Single Op Assisted	HP	42,000
12/21/25	NN4SS	Single Op	HP	20,064
12/21/25	W1RPG	Single Op Assisted	HP	3,780
12/21/25	WB3X	Single Op CW	LP	12,980
12/21/25	WB4HRL	Single Op Assisted	HP	11,764
RTTY Roundup				
01/05/26	K4FT	Single Op	LP	11,970
01/07/26	K7OM	Single Op	HP	12,558
01/05/26	KD4S	SO Unlimited Limited-Ant	HP	26,311
01/05/26	KG4IGC	Single Op	LP	11,454
01/05/26	KS4YX	Single Op	LP	27,432
01/05/26	KZ3P	Single Op	LP	5,625
01/05/26	N4IIT	SO Unlimited Limited-Ant	LP	26,554
01/04/26	NN4SS	Single Op	HP	27,966
01/04/26	NV4T	Single Op Limited-Ant	LP	7,436
01/05/26	W4ANT	Single Op	LP	7,950
01/05/26	W4IX	Single Op	LP	107,802
01/07/26	WA4LDU	Single Op Limited-Ant	LP	4,802
01/05/26	WB4HRL	SO Unlimited	LP	4,444
TBDC Dec 27				
12/28/25	K4FT	Single Op	LP	397
12/28/25	KD4S	Single Op	HP	634
12/28/25	N4IQ	Single Op	HP	635
12/28/25	NN4SS	Single Op	HP	590
12/28/25	W4IX	Single Op	LP	2,187
12/28/25	WB3X	Single Op	LP	353
WRT Jan 9				
01/09/26	NV4T	Single Op	LP	100
WRT Jan 16				

Contest	Call	Class	Pwr	Score
01/16/26	W1AW/4(W1AW,NV4T)	Single Op	LP	110
YOTA				
12/30/25	K4QQG	SOAB	HP	455
12/29/25	KA2G	SOAB	HP	2,314

=====

73 es QRT de N4XL